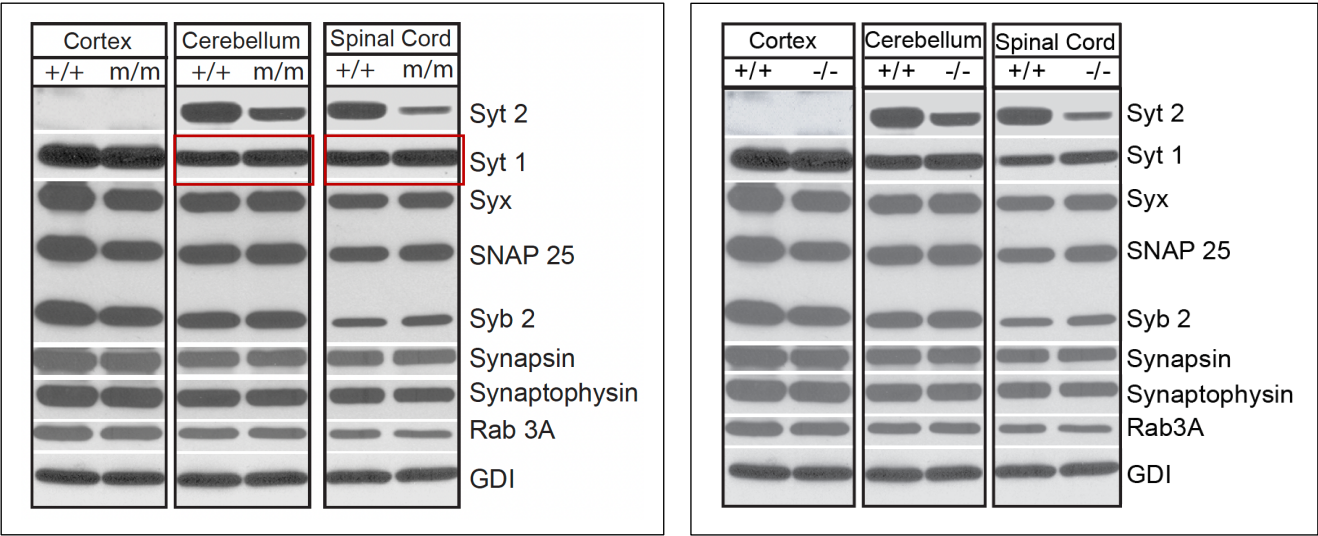


Note: Supplemental Figure S1 of this paper contains an isolated image duplication mistake

Upon systematically screening this paper with newly available software, we discovered that a pair of blots was inadvertently duplicated. The incorrect (*left panel*, duplications highlighted) and correct figures (*right panel*) are shown below.



Detailed description of the experiment, data, and nature of the mistake

The cortex, cerebellum, and spinal cord of wild type (+/+) and I377N mutant (m/m) were lysed, and ECL Western Blots using different antibodies were conducted. In the figure included in the supplementary Figure 1, we inadvertently duplicated the blot image of the cerebellum. The error was corrected by inserting the correct panel from the original Western blot of the spinal cord homogenate. This error does not impact the conclusion of this paper.

Below is a phosphorimager data using ¹²⁵I-conjugated 2nd antibodies for protein quantitation

